



# Plume Community Teaching Partnership

EVERY LESSON SHAPES A LIFE



Teacher Training  
Plume Community  
Teaching Partnership



Plume Community Teaching Partnership



ITT@plume.essex.sch.uk

# Contents

Introduction to the School Direct route

---

Routes into training with Plume  
Community Teaching Partnership

---

Training with Plume Community Teaching  
Partnership

---

Our Team

---

Supporting the Trainee Teacher

---



**“The mediocre teacher tells. The good teacher explains. The superior teacher demonstrates. The great teacher inspires.” William Arthur**

## Introduction to the School Direct Route

Our School Direct (tuition fee) programme allows you to learn on the job as you work towards your Qualified Teacher Status (QTS) recommendation. This non-salaried route is run by Plume Community Teaching Partnership and we work closely with TES Institute. You will be based at Plume Academy or one of our partner secondary or primary schools and your pedagogical training will be delivered by TES Institute.

School Direct programmes are popular with students who are hoping to gain a position in their placement or other local schools following their training.

Although your training is based in a school, in many ways your training will be similar to training programmes in universities and colleges. Our Post Graduate Certificate of Education (PGCE) route is accredited by the University of East London.

While the majority of School Direct training programmes lead to a PGCE qualification, you may also opt for our QTS only route, which will fully qualify you to teach in England and Wales.

## Entry Requirements

You must have achieved the following minimum requirements to be eligible to apply for School Direct (tuition fee) programmes:

You'll need to hold an undergraduate degree awarded by a UK higher education provider, or a recognised equivalent qualification.

You'll need to have achieved a standard equivalent to grade C(4), or above, in the GCSE examinations in English and mathematics.

If you intend to train to teach pupils aged three to eleven (early years and primary), you must also have achieved a standard equivalent to a grade C(4), or above, in a GCSE science examination.

Please ask one of our team for a TES Institute School Direct Prospectus for more information



# Routes into teaching with Plume Community Teaching Partnership

Do you meet the entry requirements?

- Educated to degree level
- GCSE Grade 4(C) in English and mathematics
- Additional grade 4(C) or above in Science for Primary

Yes

Would you like some classroom experience before applying?

No

Consider a GCSE equivalency test and/or completing a degree



Yes

Call Amy or Luisa to arrange a visit on  
01621 854 681

No

Contact us if you have any further  
queries or apply via UCAS

# Training with Plume Community Teaching Partnership

Many of us will remember that one teacher we had growing up who made us look forward to our lessons with an eagerness to learn. We tried our best for our teacher and for our future. We look back at those lessons fondly, realising how each lesson had been planned carefully using a lot of thought and creative tools to keep us engaged and interested. You could be that teacher.

A teacher plays an integral role in a child's life and we understand the importance of the Initial Teacher Training (ITT) year which is why we work hard with every trainee to ensure that they reach their full potential.



Our Initial Teacher Training programme means students will spend most of their time in schools, working with the support of their Subject Mentors, Professional Mentors and TES Institute.



## Why us?

The Plume Community Teaching Partnership offers a bespoke training programme. We carefully select a small number of candidates to ensure that our trainees are offered a varied programme tailored to their individual needs. We offer an opportunity to train with a dedicated on-site team providing constant support throughout the year.

As part of our comprehensive training year, you will benefit from:

- Induction sessions designed to help the trainee transition into the world of teaching
- Work experience in two placement schools from our extensive network of TES schools
- Weekly training sessions with our Programme Lead and experienced guest speakers
- Experienced Mentors within each faculty
- Personal Mentors to answer any day to day questions and support
- A dedicated Programme Manager
- TES Institute Pathway Tutor and regular TES student training sessions
- Various social events including a graduation ceremony at the end of the training year!
- Visits to a range of educational providers

Many of our trainees complete their ITT year and stay with us at Plume Academy or in one of our partner schools, having enjoyed the experience of working in a community school as part of the Plume Community Teaching Partnership Family.

“ There has been endless support throughout the training, ensuring we have the opportunity to experience and be part of our placement schools, as well as guidance and assurance with timetables, visits etc. I have felt thoroughly supported, my mentors have been really encouraging and happy to help. I have learnt a lot from them and been able to apply this to my own teaching practice. I thoroughly enjoyed the visit weeks, seeing other schools in action and gaining valuable experience along the way. I have found that spending time together as a cohort of “trainees” has made the experience enjoyable, as well as easier, as in the later days when we needed advice from each other for assignments and portfolios. My B placement was a smooth transition and I was able to settle quickly there. I really enjoyed being part of a different school and I felt this was really important in order to gain more experience and be able to compare different schools in order to gain a wider understanding of education in the area. It is important to remember that there are other schools out there!

I have been really grateful for the experience of training here at Plume, having endless opportunities to gain experience and be part of the team, I look forward to being a “teacher” next year. ”

Samantha Shead - 2019 ITT Trainee

# Our Team



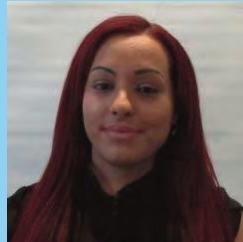
**Tom Baster**  
**ITT Programme Manager**



**Angela Gibbons**  
**ITT Professional Mentor**



**Amy Slatter**  
**ITT Administrator**



**Luisa Dello**  
**ITT Administrator**

# Supporting the Trainee Teacher

We believe that in order to succeed and achieve the most out of their Initial Teacher Trainee year, every trainee should be well supported. We have an extensive support network for all of our trainees.

Students will be trained in schools which have finely developed systems in place to nurture development of the whole teacher and equip that trainee teacher with the skills required to meet the professional standards.





# 2020-21 Fees & Bursaries

Tuition fees are £9,250 for a PGCE with QTS course and £8,625 for a QTS only course.

Unlike School Direct salaried programmes which we offer, you'll pay fees but you might be eligible for funding through student loans, bursaries, or scholarships.

If your degree subject does not link closely to your chosen teaching subject, you are still able to apply for a School Direct (tuition fee) programme and you may also be eligible for a Subject Knowledge Enhancement (SKE) course. Your chosen provider may ask you to take an SKE course as a condition of your offer, before you start your Initial Teacher Training Programme.

For 2020-21 the following tax -free bursaries are available

Chemistry  
French  
German  
Mathematics  
Physics  
Spanish  
Computing  
Biology

**£26,000**

Geography  
Design and Technology

**£15,000**

English

**£12,000**

History  
Religious Education  
Art  
Music

**£9,000**

Primary with Mathematics

**£6,000**



Teacher Training  
Plume Community  
Teaching Partnership

Plume, Maldon's Community Academy  
Fambridge Road  
Maldon  
Essex  
CM9 6AB

Contact:  
Amy Slatter or  
Luisa Dello  
01621 854 681  
[ITT@plume.essex.sch.uk](mailto:ITT@plume.essex.sch.uk)